



reed machines

Reed Machines V.O.F.

Main office: Laarweg 7, 6882 AA Velp, Netherlands

Postal address: Den Ossekamp 8, 5706 SE Helmond, Netherlands

Workshop: 2e Indumaweg 4b, 5705 BB Helmond, Netherlands

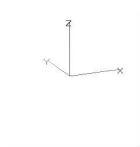
contact@reedmachines.com

www.reedmachines.com

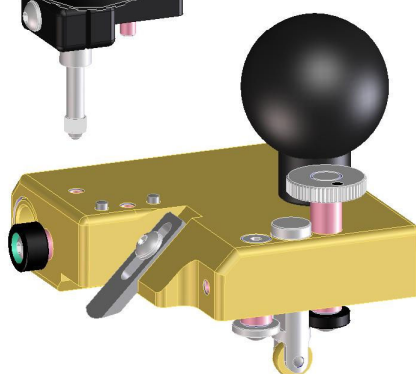
Chamber of Commerce Arnhem 57093849

VAT no. NL852435538B01

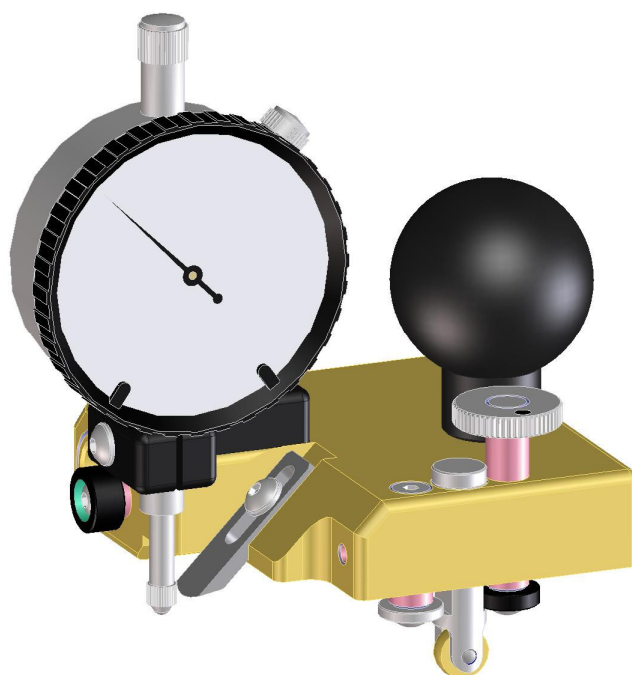
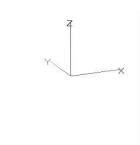
Assemble the Dial indicator set on the profiler



Dial indicator set



Carriage set





reed machines

Reed Machines V.O.F.

Main office: Laarweg 7, 6882 AA Velp, Netherlands

Postal address: Den Osekamp 8, 5706 SE Helmond, Netherlands

Workshop: 2e Indumaweg 4b, 5705 BB Helmond, Netherlands

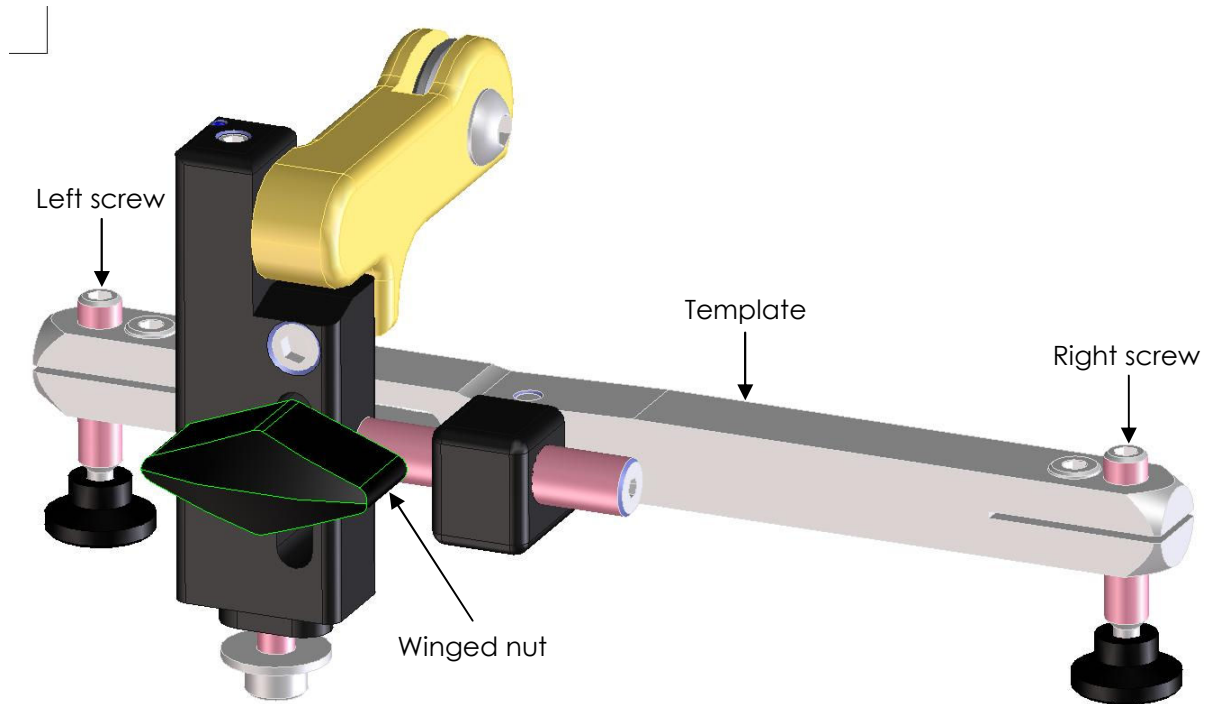
contact@reedmachines.com

www.reedmachines.com

Chamber of Commerce Arnhem 57093849

VAT no. NL852435538B01

Adjustment of the Template



Adjust the Template as follows:

- 1 Adjust the stroke to the stroke in which you want the difference in height that you want to set.
- 2 Assemble the Dial indicator set on the carriage set.
- 3 Unlock the template set with the winged nut.
- 4 By turning the screw of the leveling feet you can adjust the template. You can use the following adjustments:
 - 4.1 If you want to make the profile more steep you have to turn the left screw up and/or the right screw down.
 - 4.2 If you want to make the profile less steep you have to turn the left screw down and/or the right screw up.
 - 4.3 If you want to make the profile thinner you have to screw both screws down [A].
 - 4.4 If you want to make the profile thicker you have to screw both screws up [A].

[A] The height of the Template should be set in such a way that the Carriage set is positioned about horizontal when the knife is at the centre line of the cylinder and the space between the knife and the cylinder is equal to the tip thickness that you want.